

# Pebble Project EIS

NEWSLETTER 1 | April 2018 | [www.PebbleProjectEIS.com](http://www.PebbleProjectEIS.com)



## Scoping Notice

The U.S. Army Corps of Engineers (USACE) Alaska District is conducting an Environmental Impact Statement (EIS) level of analysis to evaluate Department of the Army permit application POA-2017-271 submitted by Pebble Limited Partnership (PLP). PLP's application states the purpose of discharges of dredged and/or fill material into jurisdictional waters of the United States is for the purpose of developing a copper-gold-molybdenum porphyry deposit as an open-pit mine, with associated infrastructure, in southwest Alaska. The EIS scoping period begins April 1 and ends April 30, 2018.

The scoping period provides opportunities for any person interested in the proposed project to share information that can help shape the scope of analysis of the EIS. This may include ideas for alternatives to the applicant's proposed action as identified in the permit application (publicly available at [pebbleprojecteis.com](http://pebbleprojecteis.com)) that could have lesser environmental impacts and identifying areas and/or issues of particular concern.



## SCOPING PROCESS BEGINS

### About PLP's Permit Application

PLP is proposing to develop the Pebble Deposit which is located under rolling, permafrost-free terrain in the Iliamna region of southwest Alaska, approximately 200 miles southwest of Anchorage and 60 miles west of Cook Inlet. The closest communities are the villages of Iliamna, Newhalen, and Nondalton, each approximately 17 miles from the Pebble Deposit. Portions of the proposed project lie within the Lake and Peninsula and Kenai Peninsula boroughs. Development of the Pebble Deposit would require federal permits from the USACE, The United States Coast Guard, and the Bureau of Safety and Environmental Enforcement for various aspects of the major project components. These three federal agencies are required to comply with the National Environmental Policy Act and thus will be using the EIS to inform their respective federal decisions. The major project components are briefly described here followed by an overview of the EIS process.

### Major Project Components

**Mine Site.** The fully developed Mine Site would include the open pit mine, a tailings storage facility, a low grade ore stockpile, overburden stockpiles, material sites, water management ponds, milling and processing facilities, and supporting infrastructure such as a power plant, water treatment plants, camp facilities, and fuel and material storage facilities.

**Transportation Corridor.** The Transportation Corridor would connect the Mine Site to the Amakdedori Port on the west side of Cook Inlet. It has three main components:

1. A private, double-lane road extending 30 miles south from the Mine Site to a ferry terminal on the north shore of Iliamna Lake.
2. An ice-breaking ferry to transport materials, equipment, and ore concentrates 18 miles across Iliamna Lake between ferry terminals on the north and south shores of the lake.
3. A private, double-lane road extending 35 miles southeast from the South Ferry Terminal near the community of Kokhanok, to the Amakdedori Port on the west side of Cook Inlet.

**Amakdedori Port.** The Amakdedori Port would be located near Amakdedori Creek on the western shore of Cook Inlet, approximately 190 miles southwest of Anchorage and approximately 95 miles southwest of Homer. It would include shore-based and marine facilities for the shipment of ore concentrates, freight, and fuel for the project. A 1300-foot earthen causeway with a 700-foot wharf would connect the port site with the docking facility. A 50-foot deep turning basin would be dredged adjacent to the docking facility, along with a 50-foot deep access channel. Other facilities would include fuel storage and transfer facilities, power generation and distribution facilities, maintenance facilities, employee accommodations, and offices.

**Natural Gas Pipeline.** Natural gas, sourced from the existing natural gas supply infrastructure for the Cook Inlet area, would supply power generation for the Pebble Project, and would require the construction of a 188-mile pipe. The gas pipeline alignment would connect to

existing infrastructure near Happy Valley on the Kenai Peninsula and travel south, paralleling the Sterling Highway for 9 miles to a compressor station near Anchor Point. From the compressor station, the pipeline would head southwest across Cook Inlet for 60 miles, before turning west for 35 miles to

a landfall at the Amakdedori Port. A second compressor station and offtake point would be located at the port site. The pipeline would then follow the transportation corridor from the port to the mine site, including crossing Iliamna Lake on the lakebed.

## ABOUT THE EIS



The USACE is serving as the lead federal agency for this EIS. The Bureau of Safety and Environment Enforcement and the United States Coast Guard have federal decision-making authority over portions of the applicant's proposed project and will serve as cooperating agencies. The U.S. Fish and Wildlife Service, Advisory Council on Historic Preservation, the State of Alaska (multiple divisions), the Lake and Peninsula Borough, the Pipeline and Hazardous Materials and Safety Administration, and the U.S. Environmental Protection Agency will serve as cooperating agencies to provide technical assistance for specifically identified special expertise. Thirty-five federally recognized tribal governments have been invited to participate directly through government-to-government consultation.

The EIS will identify potential impacts and potential benefits of the proposed project and reasonable alternatives on the physical, biological, and social environment from all phases of the project, including construction, operations, and post-closure. The EIS will also look at mitigation methods—ways in which potential negative impacts could be lessened. The USACE will use available scientific literature and subsequent data collected, alongside traditional knowledge and observations provided by the public.

We welcome your comments and information on the resources that are important to you. For example, many communities will be concerned about potential impacts to subsistence resources and land uses during project construction, operations, and closure. The EIS will address long-term cumulative effects, consider a reasonable range of alternatives, and analyze a range of practical mitigation and monitoring measures for protecting public health, water quality, wildlife, and subsistence resources.







## Participate!

All interested parties are invited to participate in the EIS process. The goals of the public scoping process are to:

- Gather comments and suggestions from interested parties to help determine issues and concerns that are relevant to the analysis of potential impacts
- Help define a reasonable range of alternatives to evaluate in the EIS
- Capture information that will lead to the development of good mitigation and monitoring measures

## Public Scoping Meetings

USACE has chosen to conduct scoping in multiple ways including scoping meetings in addition to our newsletters, website, and other communication methods. The scoping schedule includes meetings across the project area, as well as in Anchorage and Homer. The public meeting schedule is listed below.

COMMUNITY	DATE AND TIME	LOCATION
Naknek	April 9, 2018, 3:30 pm	Naknek School
Kokhanok	April 10, 2018, 3:30 pm	Tribal Hall
Homer*	April 11, 2018, 5:30 pm	High School
Newhalen	April 12, 2018, 3:30 pm	Newhalen School
Nondalton	April 16, 2018, 3:30 pm	Tribal Center
Dillingham*	April 17, 2018, 5:00 pm	Middle School
Iguigig	April 18, 2018, 3:30 pm	Community Building
Anchorage*	April 19, 2018, 5:00 pm	Dena'ina Center

*\*To avoid long wait times, a hot mic format will not be used.*

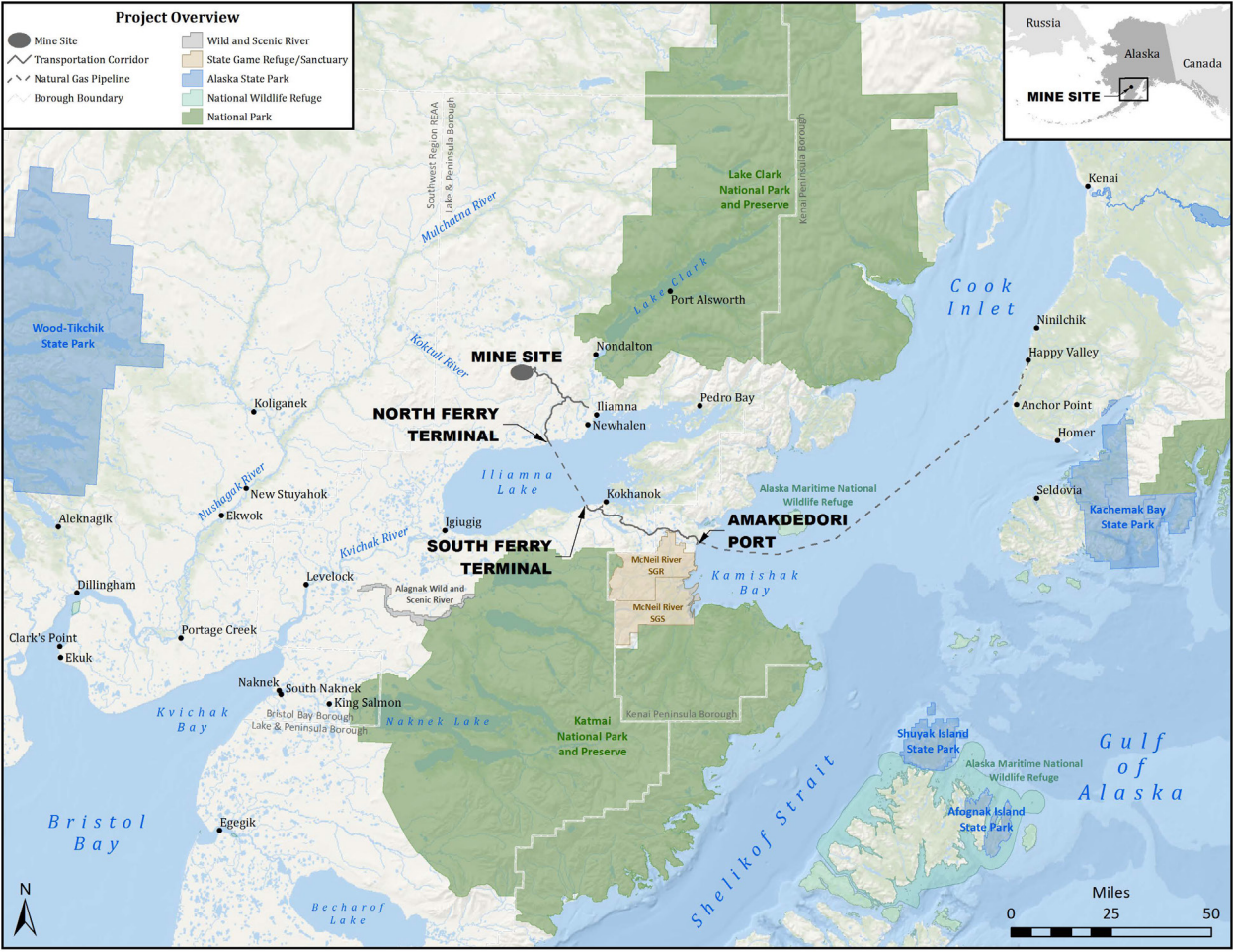
## TO PARTICIPATE...

Providing ample opportunities for the public to submit scoping comments on the Pebble Project EIS is of utmost importance to the USACE. Come to scoping meetings and share your thoughts regarding project impacts and benefits and ideas for alternatives. Give your comment orally to a dedicated court reporter, or electronically submit using one of a number of dedicated laptop computers. You can also bring written comments to a meeting, use the comment form on the project website ([www.PebbleProjectEIS.com](http://www.PebbleProjectEIS.com)), or send them to:

Program Manager, Regulatory Division  
 US Army Corps of Engineers  
 PO Box 6898  
 Joint Base Elmendorf Richardson,  
 AK 99506-0898

### Let us know what aspects of the proposed project are important to you!

Written scoping comments can be submitted through April 30, 2018.  
 Comments received/postmarked after April 30 will be considered, but may not be included in the scoping report.  
 Comments will be reviewed and incorporated into the Draft EIS, as appropriate



Program Manager  
Regulatory Division  
US Army Corps of Engineers  
PO Box 6898  
Joint Base Elmendorf Richardson AK 99506-0898