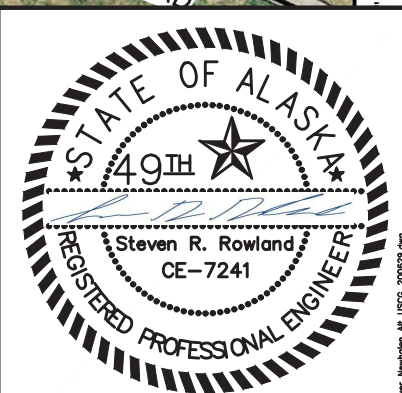


BRIDGE SITE WITHIN  
 SEC.1 T4S R33W, SM  
 NO REFUGES ARE PRESENT WITHIN THE  
 BOUNDARIES OF THIS LOCALITY MAP



06/29/2020

PREPARED BY: RECON LLC  
 565 W. RECON CIR. PALMER, AK 99645  
 REVIEWED BY: SRR  
 DRAWN BY: MCS REVIEW DATE:06/29/2020

**NEWHALEN RIVER BRIDGE**  
 MINE SITE TO ILIAMNA BAY ROAD  
 LAKE & PEN. BOROUGH, ALASKA  
 ~15.1 MILES UP RIVER FROM LAKE ILIAMNA

APPLICANT: PEBBLE LIMITED PARTNERSHIP  
 3201 C STREET, SUITE 505 ANCHORAGE, AK 99503  
 12/06/2019  
 8.5" x 11"

0 100 200



1" = 100'

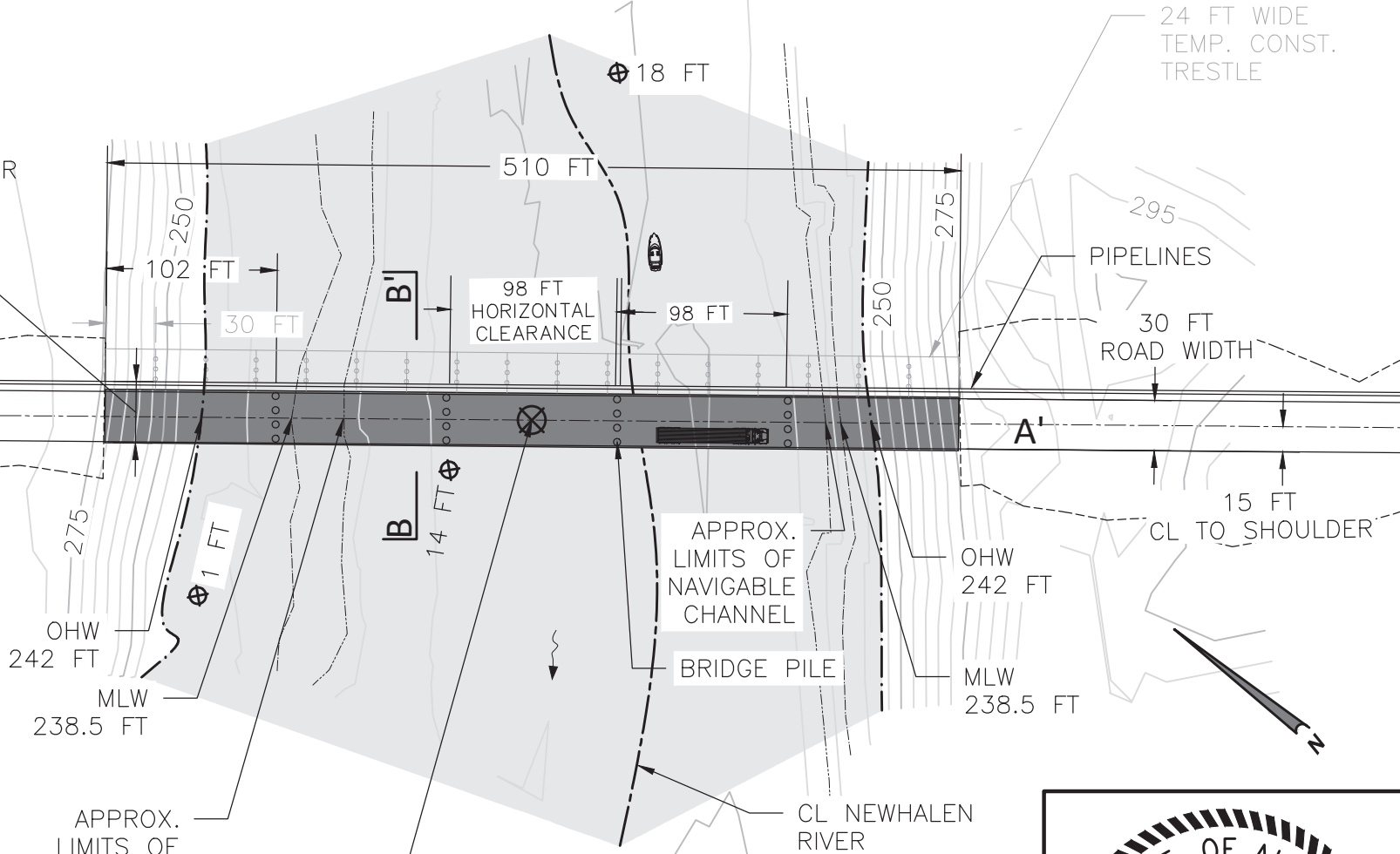
APPROX. LIMITS OF CUT. NO EXCAVATION TO OCCUR BELOW OHW

35 FT FULL STRUCTURE WIDTH

NOTE:

1. 24 FT BOAT  
66 FT TRUCK  
SHOWN FOR SCALE
2. CONCEPTUAL PLANS BASED ON 2019 GROUND SURVEY BY RECON AND 2019 HYDROLOGICAL REPORT BY HYDRAULIC MAPPING AND MODELING.
3. MLW WATER BASED ON HISTORICAL GAUGE DATA AND FIELD OBSERVATIONS.
4. EXCEPT FOR PLACEMENT OF PILES, NO OTHER EXCAVATION, DREDGING, OR PLACEMENT OF FILL/RIPRAP BELOW OHW.
5. ALL LAND OWNED BY ILIAMNA NATIVES LTD.

⊗ WATER DEPTH AT POINT BELOW OHW.



APPROX. LIMITS OF NAVIGABLE CHANNEL

APPROX. LIMITS OF NAVIGABLE CHANNEL

BRIDGE PILE

CL NEWHALEN RIVER

DATUM: NAD83 ASPZ 5, NAVD88 GEOID99, FT  
 COORDINATES AT CENTER OF BRIDGE  
 N: 2,140,504 E: 1,477,678  
 LAT: 59° 51' 23" N  
 LONG: 154° 53' 06" W  
 ELEVATION: 280'

STATE OF ALASKA  
 49th  
 Steven R. Rowland  
 CE-7241  
 REGISTERED PROFESSIONAL ENGINEER  
 06/29/2020

**PLAN VIEW**  
**CONCEPTUAL PLANS FOR COAST GUARD REVIEW**

PREPARED BY: RECON LLC  
 565 W. RECON CIR. PALMER, AK 99645

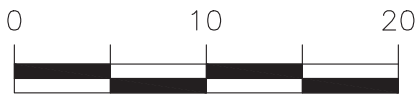
REVIEWED BY: SRR  
 DRAWN BY: MCS REVIEW DATE: 06/29/2020

**NEWHALEN RIVER BRIDGE**  
 MINE SITE TO ILIAMNA BAY ROAD  
 LAKE & PEN. BOROUGH, ALASKA  
 ~15.1 MILES UP RIVER FROM LAKE ILIAMNA

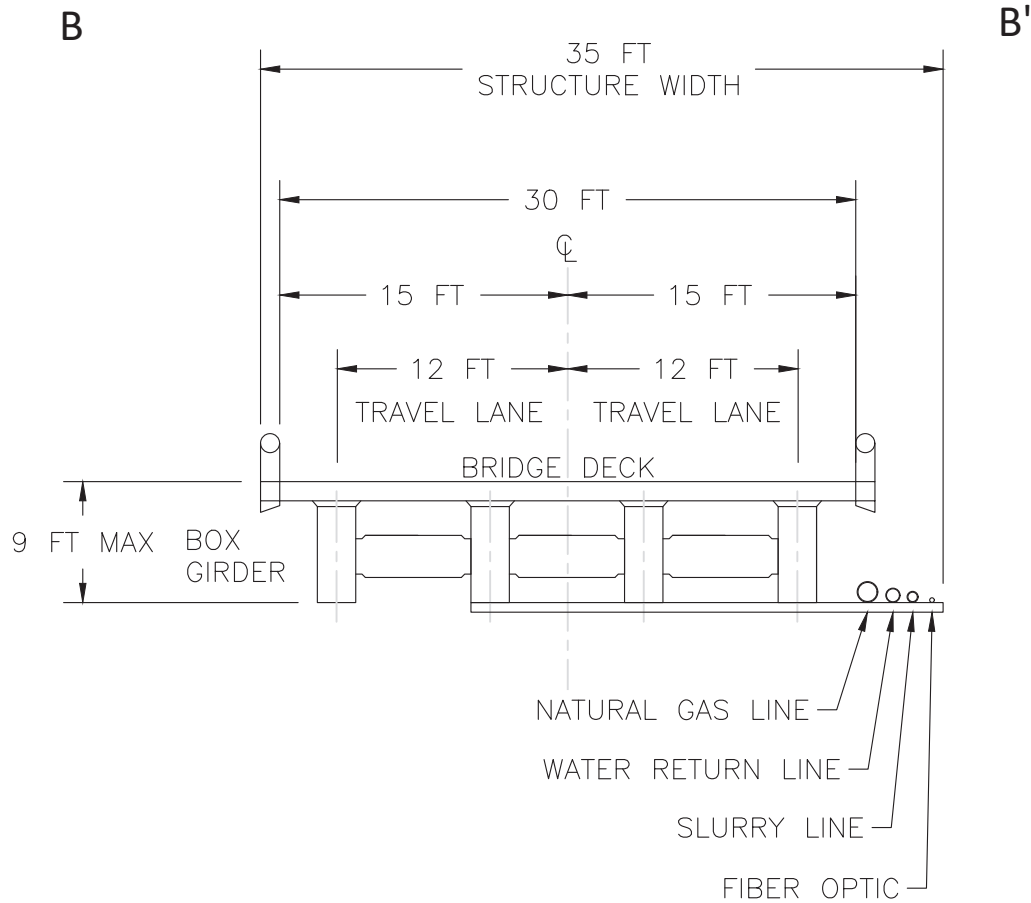
APPLICANT: PEBBLE LIMITED PARTNERSHIP  
 3201 C STREET, SUITE 505 ANCHORAGE, AK 99503  
 12/06/2019  
 8.5" x 11" SHEET 2 OF 4

DWG FILE: Loner Newhalen AL USCG\_200620.dwg

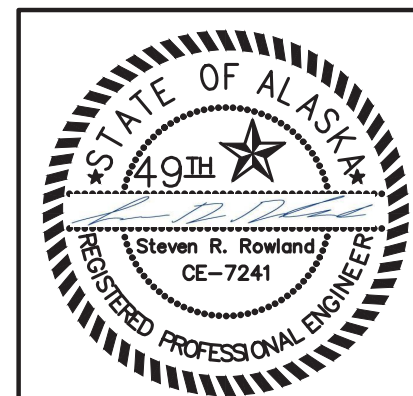




1" = 10'



**BRIDGE STRUCTURE TYPICAL SECTION**  
**CONCEPTUAL PLANS FOR COAST GUARD REVIEW**



06/29/2020

PREPARED BY: RECON LLC  
 565 W. RECON CIR. PALMER, AK 99645

REVIEWED BY: SRR  
 DRAWN BY: MCS REVIEW DATE: 06/29/2020

**NEWHALEN RIVER BRIDGE**  
 MINE SITE TO ILIAMNA BAY ROAD  
 LAKE & PEN. BOROUGH, ALASKA  
 ~15.1 MILES UP RIVER FROM LAKE ILIAMNA

APPLICANT: PEBBLE LIMITED PARTNERSHIP  
 3201 C STREET, SUITE 505 ANCHORAGE, AK  
 99503

12/06/2019  
 8.5" x 11"

SHEET 4 OF 4

DWG FILE: Loner Newhalen AK USCG\_200629.dwg