



July 6, 2020

PUBLIC NOTICE (02-20)

All interested parties are notified that an application has been received from the Pebble Limited Partnership (PLP) for approval of the location and plans for a new bridge crossing a navigable waterway of the United States. The construction of the bridge across the Newhalen River is part of the transportation corridor element of PLP's proposed mining project..

WATERWAY AND LOCATION: The Newhalen River, mile 15.1 from the mouth of the waterway at Lake Iliamna near Iliamna, AK.

CHARACTER OF WORK: The proposed new bridge would be 35 feet wide with two vehicle lanes and five spans of 102 feet each for a total bridge length of 510 feet from abutment to abutment. The bridge structure would include a concrete deck on box girders supported by steel pile bent piers with the piling drilled and set into bedrock below ordinary high water. To facilitate construction of the bridge, a temporary trestle will be in place. It will limit horizontal clearance to 30' while it is in place and will be removed upon completion of bridge construction.

MINIMUM NAVIGATIONAL CLEARANCES:

	Proposed
Horizontal feet (from trestle to trestle)	98
Vertical feet (from ordinary high water to bottom of bridge)	29

Ordinary High Water = 17 feet (NAVD88 DATUM)

ENVIRONMENTAL CONSIDERATIONS:

The lead agency for satisfying the requirements of the National Environmental Policy Act is the US Army Corps of Engineers (USACE), which acts on behalf of the Coast Guard for all environmental laws.

An Environmental Impact Statement was prepared by USACE and is available for review here: <https://pebbleprojecteis.com/documents/eis>

The applicant has applied for a Section 401 Certificate of Reasonable Assurance.

This proposed bridge will not encroach upon the base floodplain.

The Coast Guard's decision to grant approval of the location and plans for the proposed project rests primarily upon the effect that the project has on navigation.

SOLICITATION OF COMMENTS:

Waterway users are requested to comment on the placement of a bridge protective system and other navigational safety issues, including the need for clearance gauges and extent of nighttime navigation passing through the bridge to determine the need for bridge lighting. Boat owners in the project vicinity are requested to provide information about their vessels, including type of vessel, overall length, draft, beam, and height from the waterline to the highest fixed point.

Interested parties are requested to express their views in writing on the proposed bridge project, giving sufficient detail to establish a clear understanding of their reasons for support of or opposition to the proposed work. Comments can be sent by email to Clinton.L.Scott@uscg.mil or by mail to Commander, Seventeenth Coast Guard District (dpw-bridges), P.O. Box 25517 Juneau, Alaska 99802 for a 30-day period from the date of the public notice.

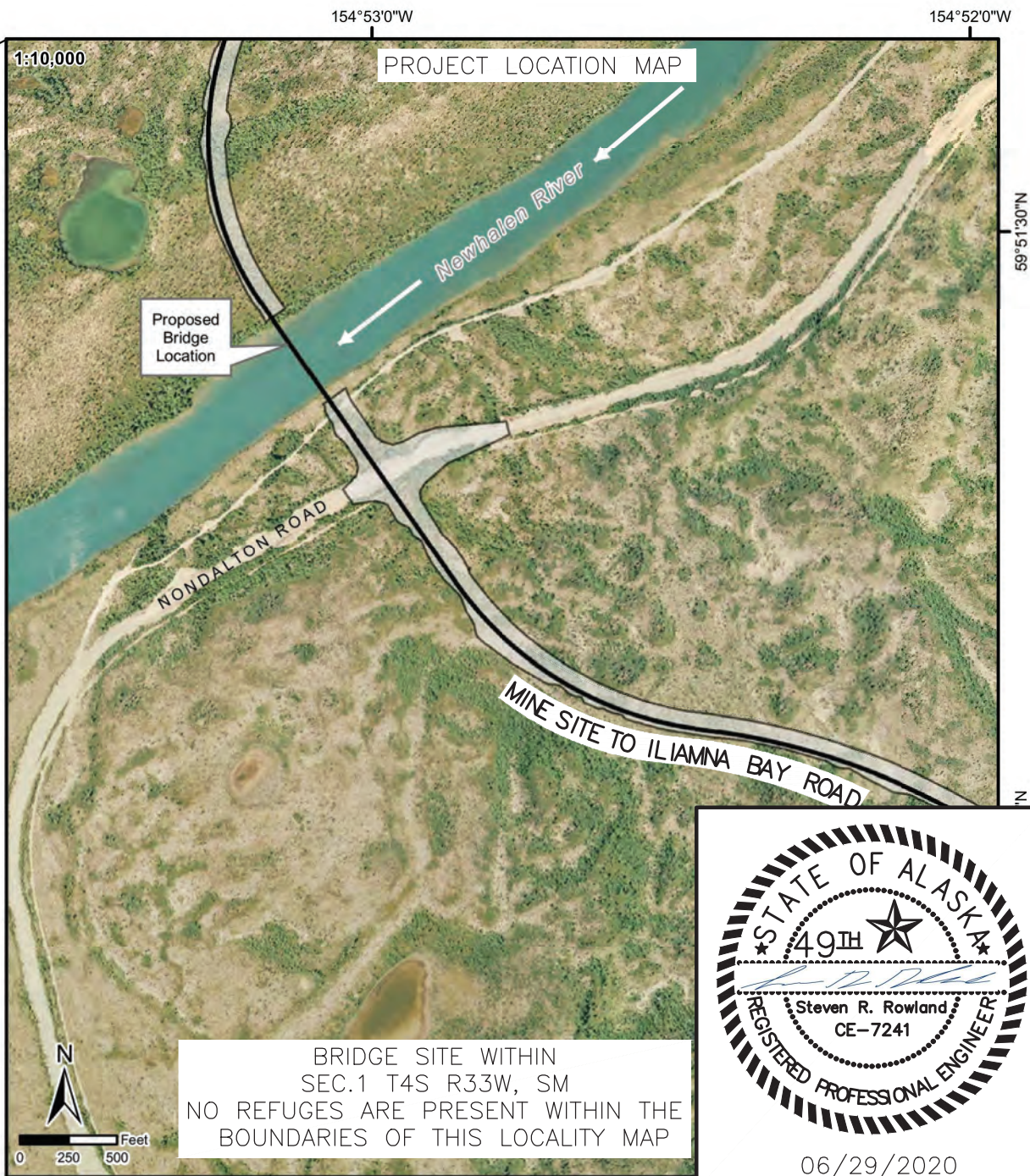
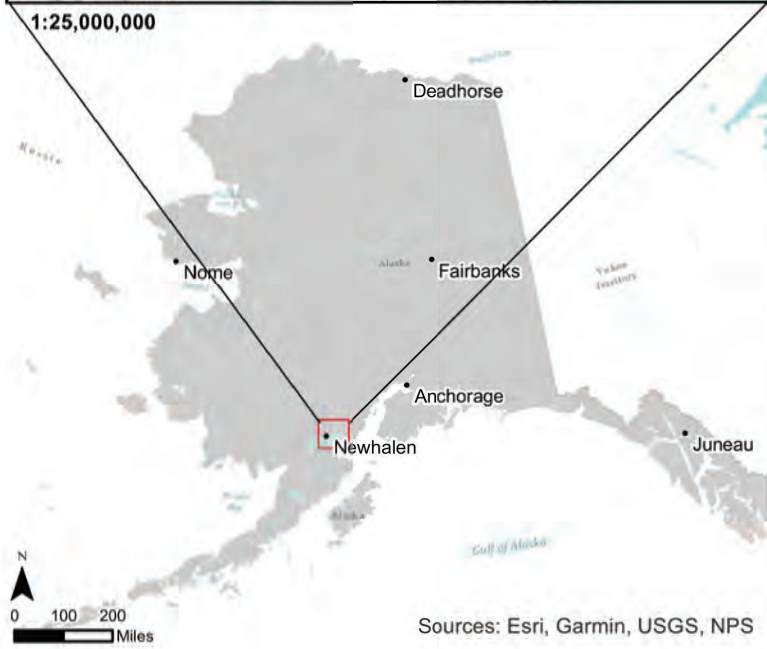
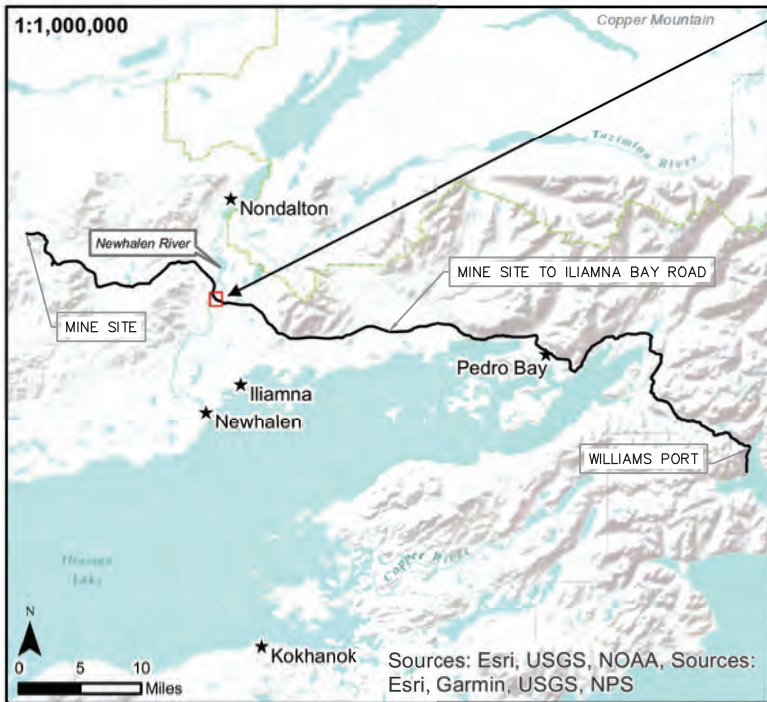
We will forward comments of an environmental nature, such as those regarding wildlife refuges, waterfowl refuges, public parks, historic sites, wetlands, floodplain issues, air and water quality, etc. to USACE for appropriate consideration.

Map of location and plans are attached.

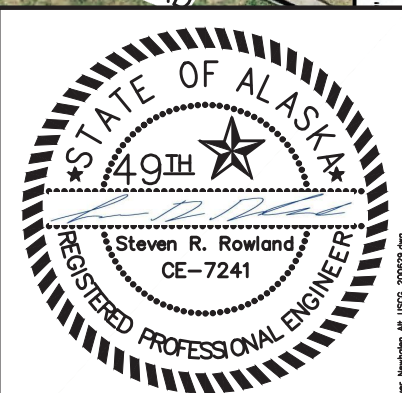
//s//

Clinton L. Scott
Bridge Program Administrator
U.S. Coast Guard District 17
By direction of the District Commander

"This is a web-searchable copy and is not the official, signed version; however, other than the signature being omitted, it is a duplicate of the official version."



BRIDGE SITE WITHIN
 SEC.1 T4S R33W, SM
 NO REFUGES ARE PRESENT WITHIN THE
 BOUNDARIES OF THIS LOCALITY MAP



06/29/2020

PREPARED BY: RECON LLC
 565 W. RECON CIR. PALMER, AK 99645
 REVIEWED BY: SRR
 DRAWN BY: MCS REVIEW DATE:06/29/2020

NEWHALEN RIVER BRIDGE
 MINE SITE TO ILIAMNA BAY ROAD
 LAKE & PEN. BOROUGH, ALASKA
 ~15.1 MILES UP RIVER FROM LAKE ILIAMNA

APPLICANT: PEBBLE LIMITED PARTNERSHIP
 3201 C STREET, SUITE 505 ANCHORAGE, AK 99503
 12/06/2019
 8.5" x 11"

0 100 200



1" = 100'

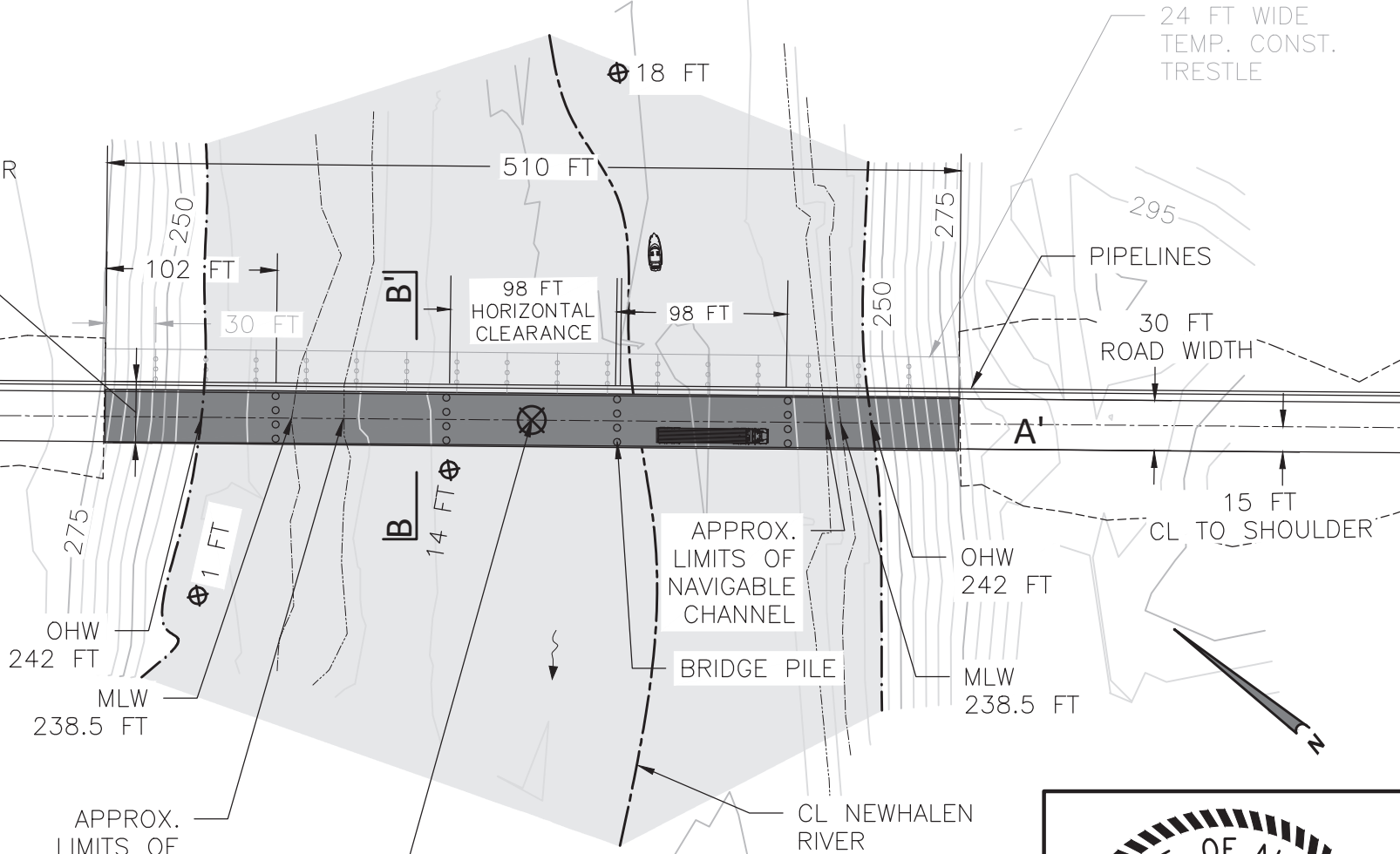
APPROX. LIMITS OF CUT. NO EXCAVATION TO OCCUR BELOW OHW

35 FT FULL STRUCTURE WIDTH

NOTE:

1. 24 FT BOAT
66 FT TRUCK
SHOWN FOR SCALE
2. CONCEPTUAL PLANS BASED ON 2019 GROUND SURVEY BY RECON AND 2019 HYDROLOGICAL REPORT BY HYDRAULIC MAPPING AND MODELING.
3. MLW WATER BASED ON HISTORICAL GAUGE DATA AND FIELD OBSERVATIONS.
4. EXCEPT FOR PLACEMENT OF PILES, NO OTHER EXCAVATION, DREDGING, OR PLACEMENT OF FILL/RIPRAP BELOW OHW.
5. ALL LAND OWNED BY ILIAMNA NATIVES LTD.

⊗ WATER DEPTH AT POINT BELOW OHW.



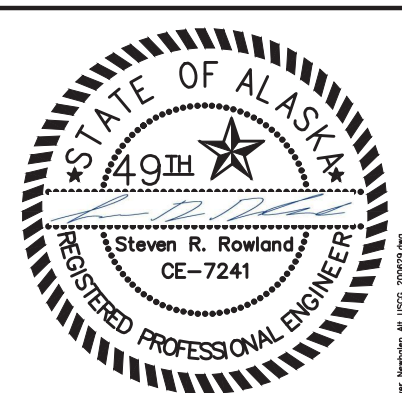
APPROX. LIMITS OF NAVIGABLE CHANNEL

APPROX. LIMITS OF NAVIGABLE CHANNEL

BRIDGE PILE

CL NEWHALEN RIVER

DATUM: NAD83 ASPZ 5, NAVD88 GEOID99, FT
 COORDINATES AT CENTER OF BRIDGE
 N: 2,140,504 E: 1,477,678
 LAT: 59° 51' 23" N
 LONG: 154° 53' 06" W
 ELEVATION: 280'



06/29/2020

PLAN VIEW
CONCEPTUAL PLANS FOR COAST GUARD REVIEW

PREPARED BY: RECON LLC
565 W. RECON CIR. PALMER, AK 99645

REVIEWED BY: SRR
DRAWN BY: MCS REVIEW DATE: 06/29/2020

NEWHALEN RIVER BRIDGE
MINE SITE TO ILIAMNA BAY ROAD
LAKE & PEN. BOROUGH, ALASKA
~15.1 MILES UP RIVER FROM LAKE ILIAMNA

APPLICANT: PEBBLE LIMITED PARTNERSHIP
3201 C STREET, SUITE 505 ANCHORAGE, AK 99503

12/06/2019
8.5" x 11"

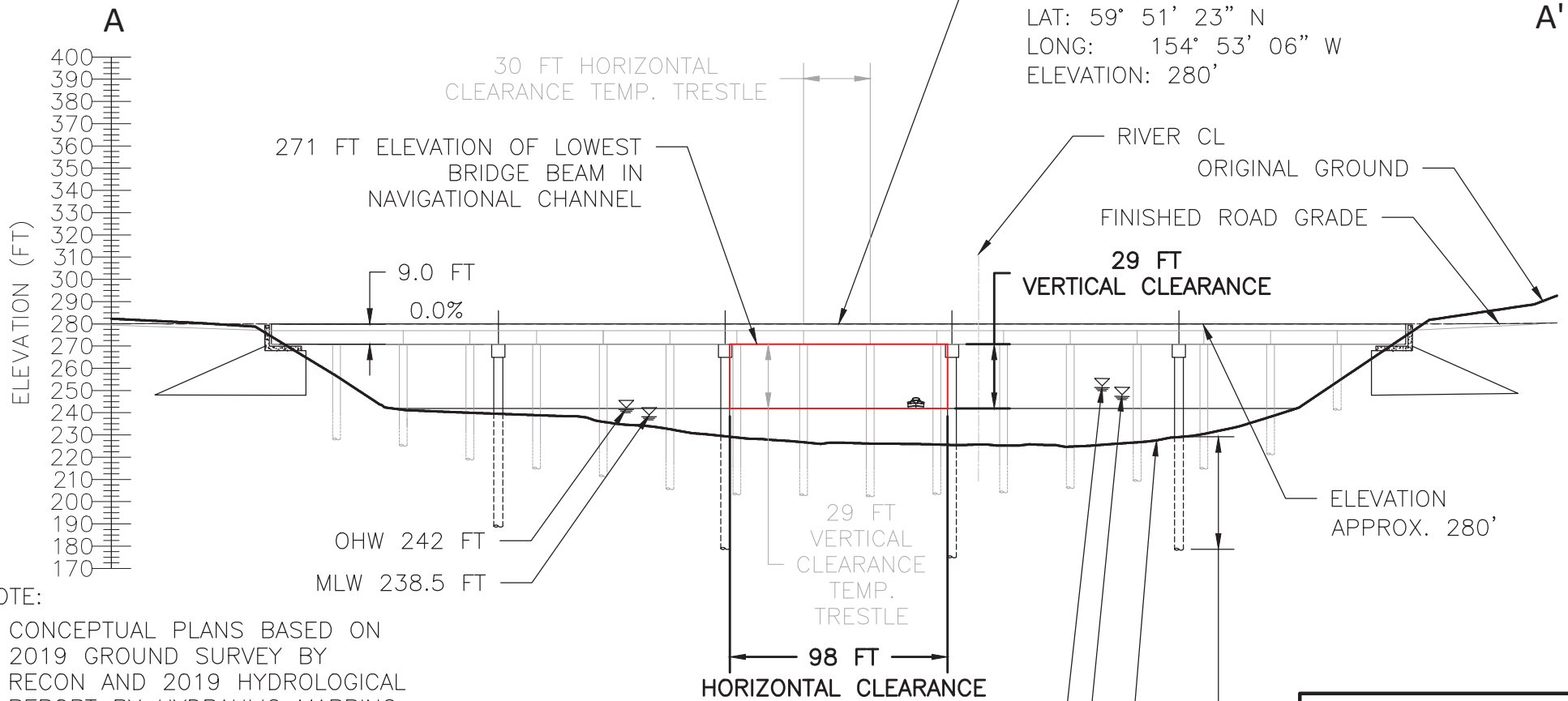
SHEET 2 OF 4

DWG FILE: Loner Newhalen AL USCG_200620.dwg

0 70 140

H: 1"=70' V: 1"=70'

DATUM: NAD83 ASPZ 5, NAVD88 GEOID99, FT
COORDINATES AT CENTER OF BRIDGE
N: 2,140,504 E: 1,477,678
LAT: 59° 51' 23" N
LONG: 154° 53' 06" W
ELEVATION: 280'



- NOTE:
1. CONCEPTUAL PLANS BASED ON 2019 GROUND SURVEY BY RECON AND 2019 HYDROLOGICAL REPORT BY HYDRAULIC MAPPING AND MODELING.
 2. MLW WATER BASED ON HISTORICAL GAUGE DATA AND FIELD OBSERVATIONS.
 3. APPROX. 375 CYDS OF ROCK AND SOIL TO BE EXCAVATED FOR PILES.
 4. APPROX. TOTAL OF 375 CYDS OF CONCRETE TO BE PLACED IN 20 PILES.
 5. NO OTHER FILL OR RIPRAP TO BE PLACED BELOW OHW

ELEVATION VIEW
CONCEPTUAL PLANS FOR COAST GUARD REVIEW

STATE OF ALASKA
49th
Steven R. Rowland
REGISTERED PROFESSIONAL ENGINEER
CE-7241
12/09/2019

PREPARED BY: RECON LLC
565 W. RECON CIR. PALMER, AK 99645

REVIEWED BY: SRR

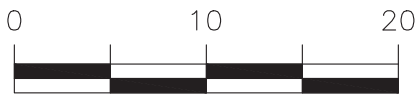
DRAWN BY: MCS REVIEW DATE: 12/04/2019

NEWHALEN RIVER BRIDGE
MINE SITE TO ILIAMNA BAY ROAD
LAKE & PEN. BOROUGH, ALASKA
~15.1 MILES UP RIVER FROM LAKE ILIAMNA

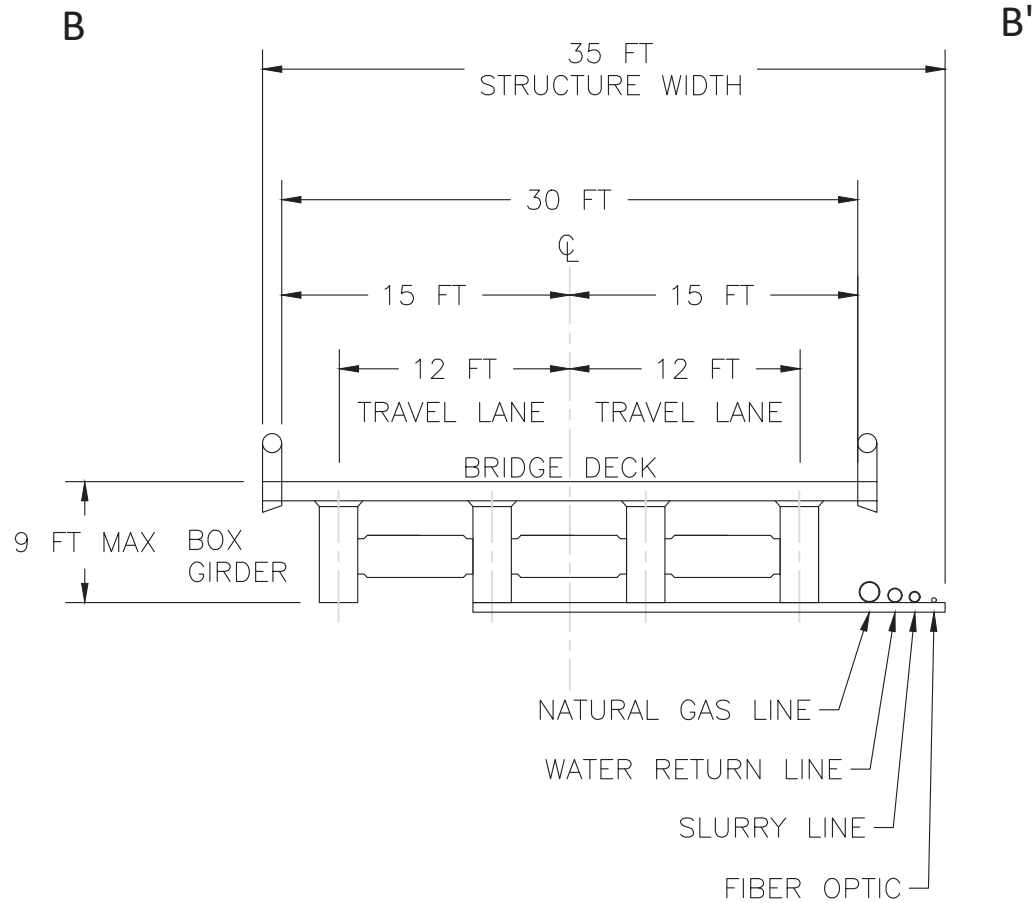
APPLICANT: PEBBLE LIMITED PARTNERSHIP
3201 C STREET, SUITE 505 ANCHORAGE, AK 99503

12/06/2019
8.5" x 11"

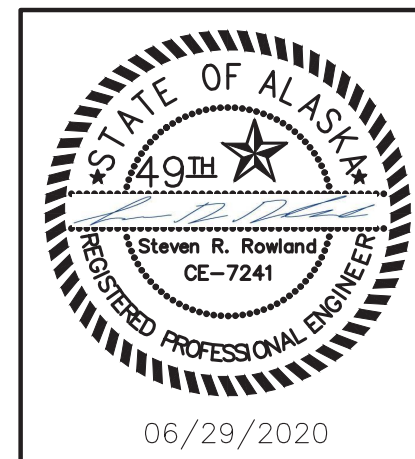
SHEET 3 OF 4



1" = 10'



**BRIDGE STRUCTURE TYPICAL SECTION
CONCEPTUAL PLANS FOR COAST GUARD REVIEW**



PREPARED BY: RECON LLC
565 W. RECON CIR. PALMER, AK 99645

REVIEWED BY: SRR
DRAWN BY: MCS REVIEW DATE: 06/29/2020

NEWHALEN RIVER BRIDGE
MINE SITE TO ILIAMNA BAY ROAD
LAKE & PEN. BOROUGH, ALASKA
~15.1 MILES UP RIVER FROM LAKE ILIAMNA

APPLICANT: PEBBLE LIMITED PARTNERSHIP
3201 C STREET, SUITE 505 ANCHORAGE, AK 99503

12/06/2019
8.5" x 11"