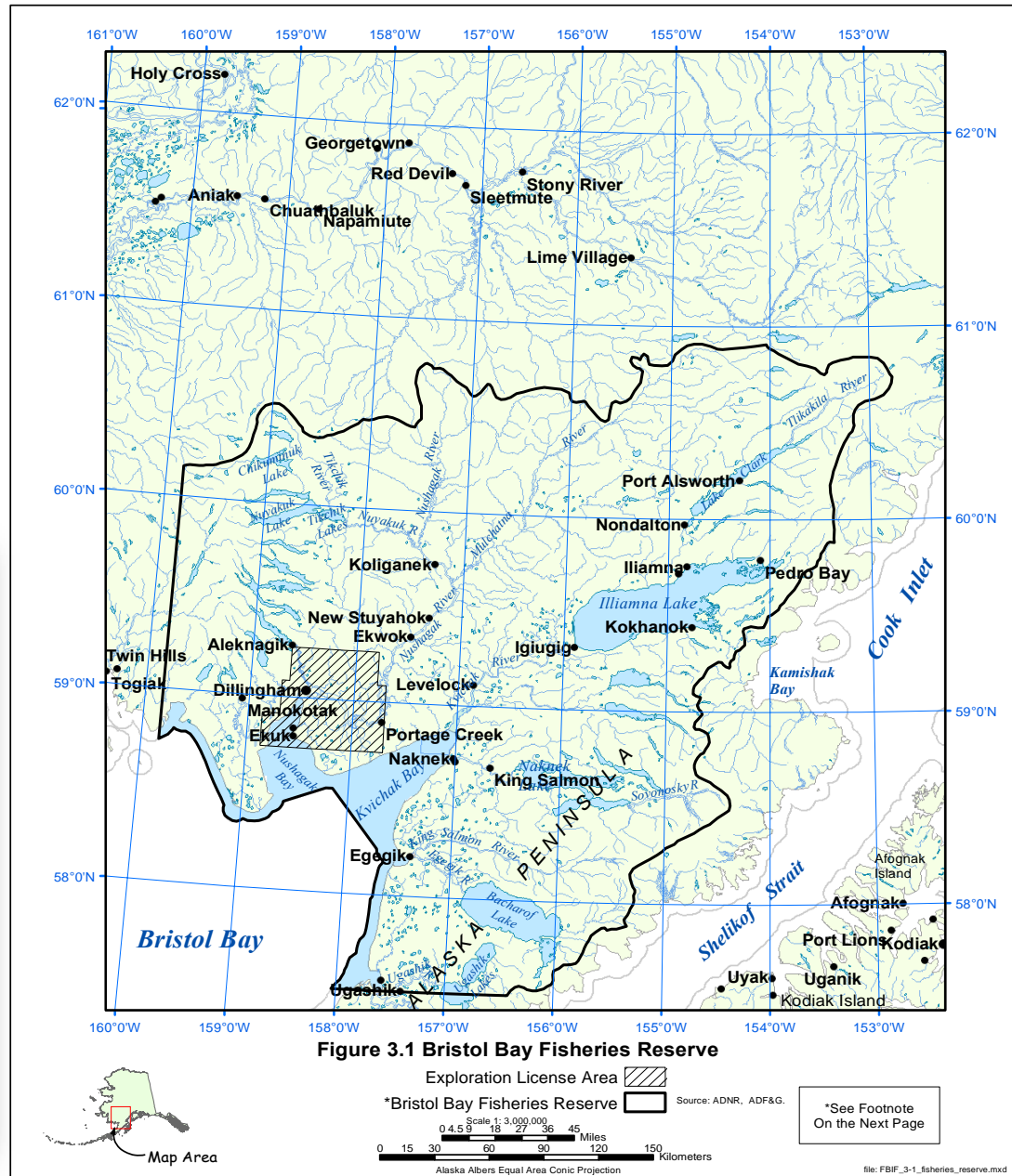


Vote YES Ballot Measure 4



Anders Gustafson

Bristol Bay Fisheries Reserve 1972

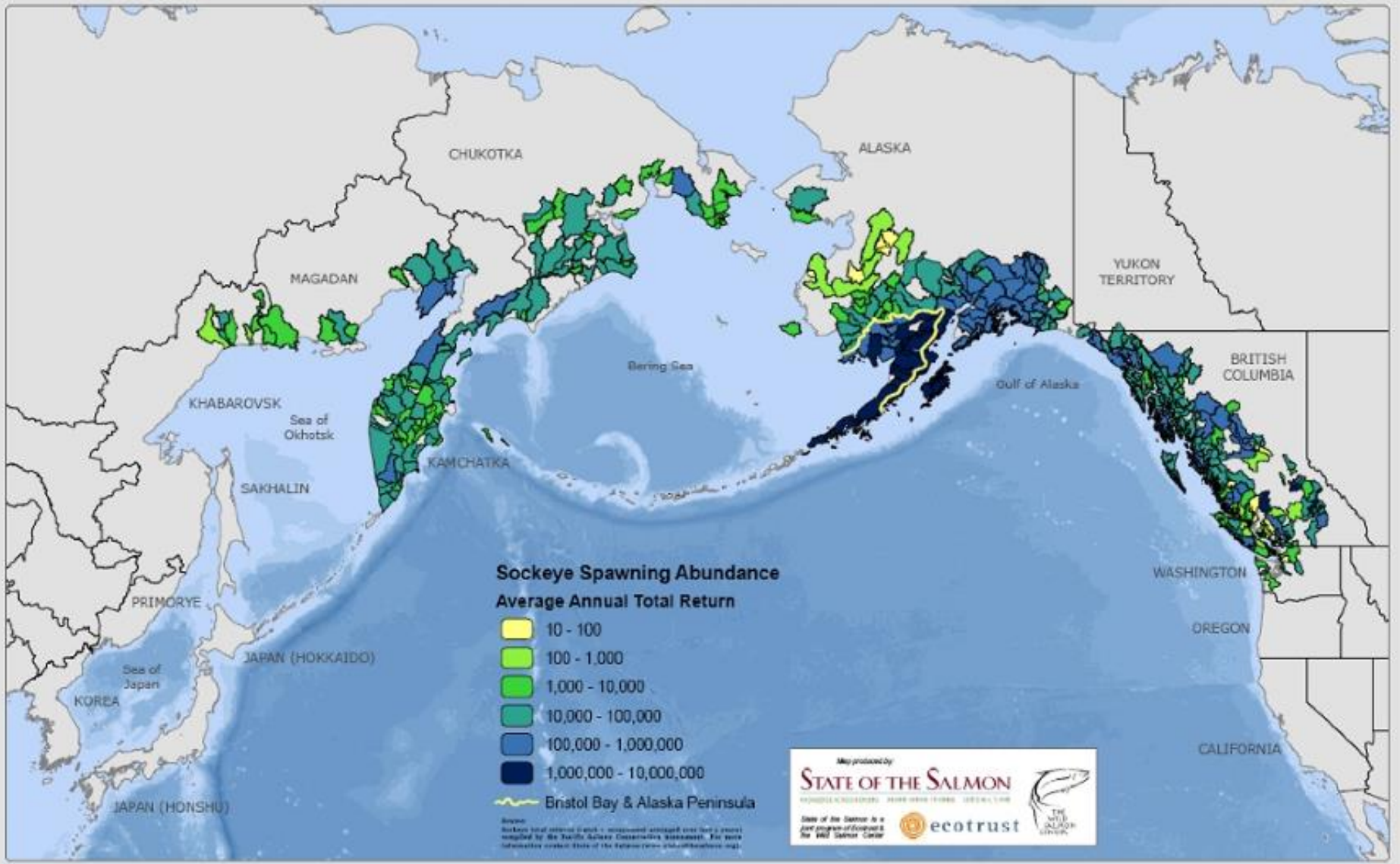








Bristol Bay: Global Stronghold for Sockeye Salmon



A large school of salmon swimming underwater. The fish are in various stages of their upstream migration, with some showing vibrant red and yellow colors. One fish in the foreground has its mouth open, showing its teeth. The water is slightly murky, and the background shows the surface of the water with light reflections.

Vote YES Ballot Measure 4